

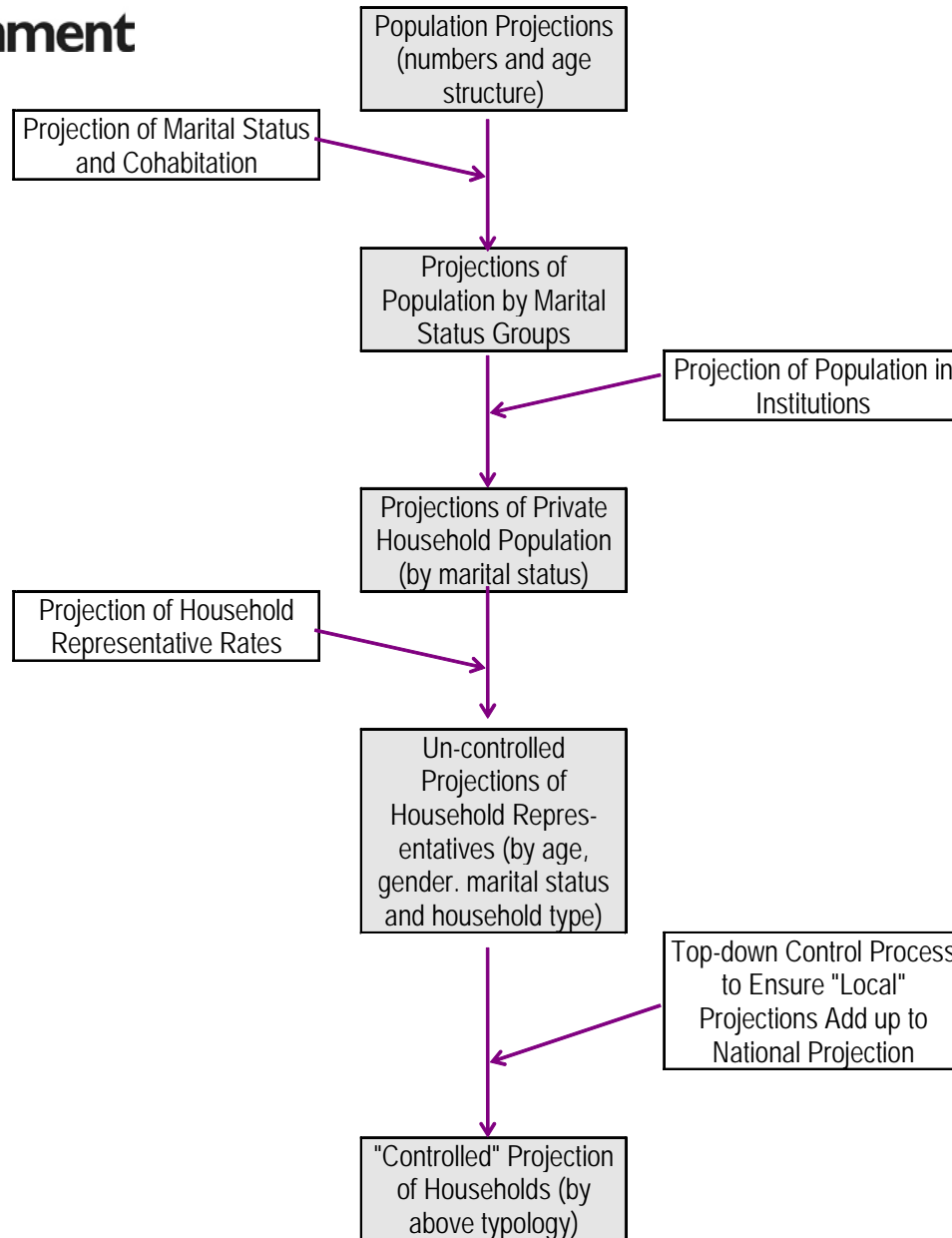
North West

Household Projections

Bob Garland

Housing Markets and Planning Analysis Division

Projection Process



Input Data Sources

- ❖ Population projections:
 - ⇒ National: Government Actuary's Department.
 - ⇒ Sub-national: ONS

- ❖ Marital status projections:
 - ⇒ National: Government Actuary's Department (de jure)
 - ⇒ National: ONS (de facto)
 - ⇒ Sub-national: ODPM

- ❖ Communal establishments population projections:
 - ⇒ National: ODPM
 - ⇒ Sub-national: ODPM

- ❖ Household formation (via household representative rates):
 - ⇒ National: ODPM
 - ⇒ Sub-national: ODPM

Overall picture

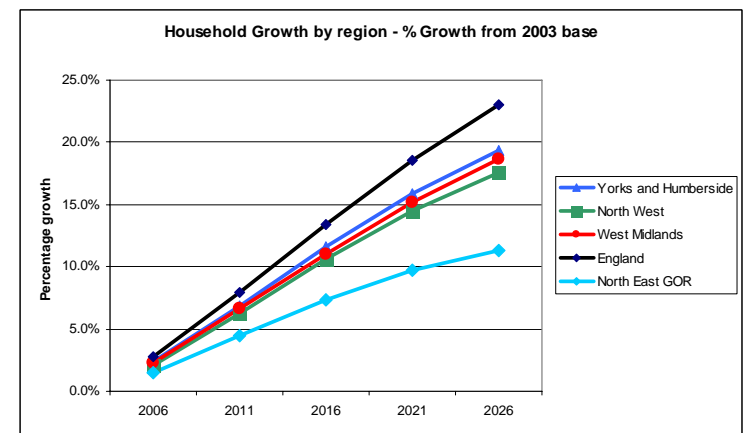
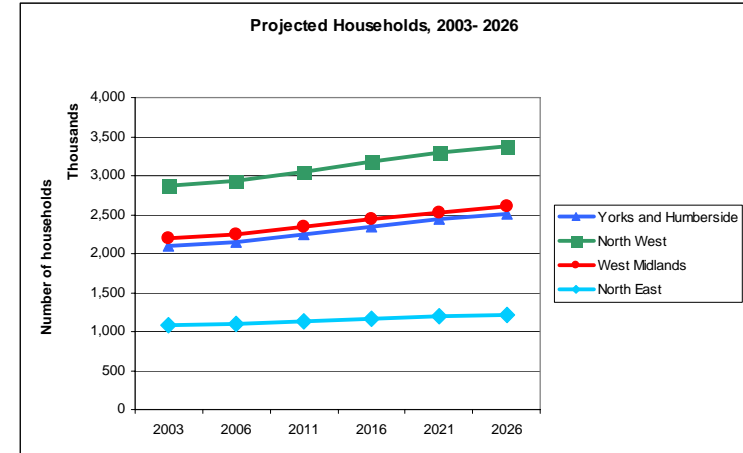
■ Household growth 2003 to 2026

■ Average Annual Rate

- North West - 21,900
- Yorkshire and the Humber - 17,700
- West Midlands - 17,800
- North East - 5,300

■ % Growth

- **England** - **23%**
- North West - 18%
- Yorkshire and the Humber - 19%
- West Midlands - 19%
- North East - 11%



- North West Regional Growth to 2026 = 18%
- High Growth in the number of households:
 - Ribble Valley (+32%)
 - Eden (+25%)
- Low Growth in the number of households :
 - Barrow in Furness (+1%)
 - Burnley (+6%)

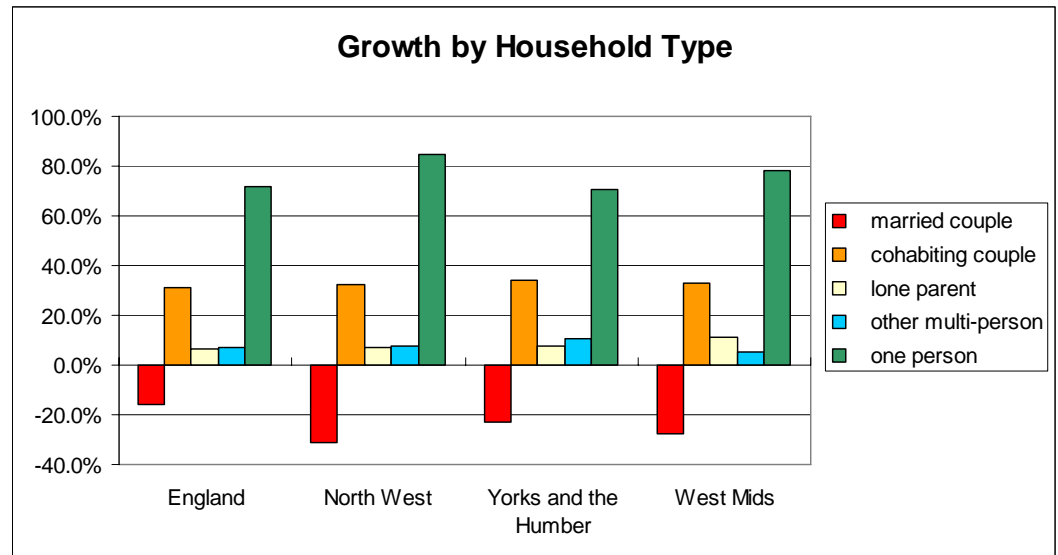
- Growth by household type

- England

- Married couple - -16%
- Cohabiting couple - 31%
- Lone Parent - 6%
- Other Multiperson - 7%
- One Person - 72%

- North West

- Married couple - -31%
- Cohabiting couple - 32%
- Lone Parent - 7%
- Other Multiperson - 7%
- One Person - 85%



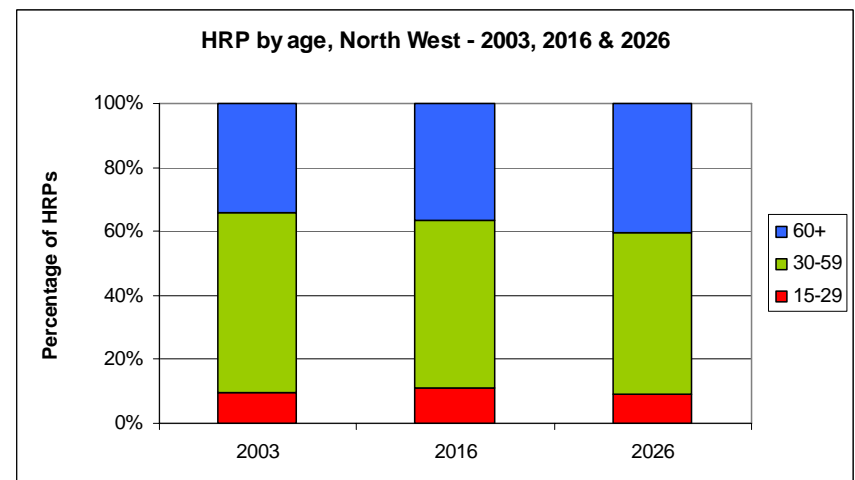
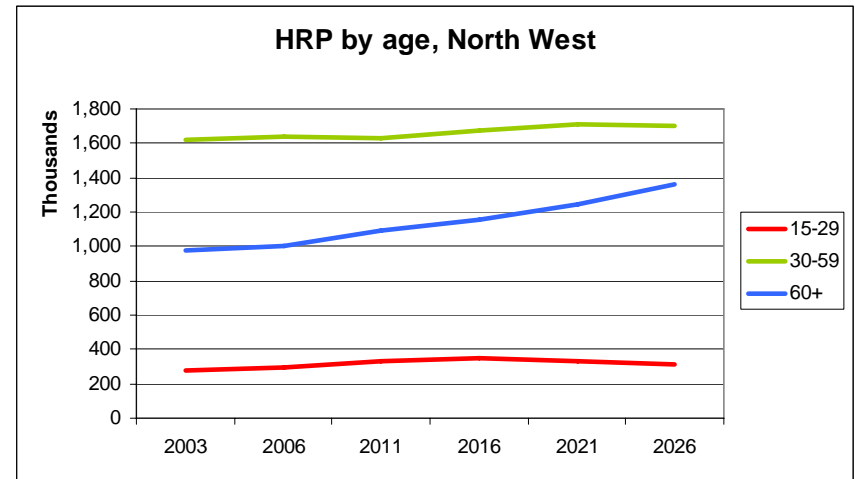
Household type and Age

England				
TOTAL GROWTH = 4,800 Thousand households				
AGE	15-29	30-59	60+	Total
Household Type				
Married Couple	-2%	-36%	23%	-16%
Cohabiting Couple	2%	23%	6%	31%
Lone Parent	1%	5%	0%	6%
Other Mulitperson	1%	2%	4%	7%
One person	2%	35%	35%	72%
	4%	28%	67%	

North West				
TOTAL GROWTH = 504 Thousand households				
	15-29	30-59	60+	Total
	-3%	-52%	23%	-32%
	3%	23%	6%	32%
	2%	4%	1%	7%
	2%	2%	5%	8%
	3%	39%	43%	85%
	7%	16%	77%	

Household representatives

- Increase for all ages
- Greatest increase for 60+ age group
 - 1.4 Million 60+ households by 2026
- Older household (60+) represent a growing proportion, from 34% in 2003 to 40% in 2026



Comparing 1996 and 2003 based projections

England			
	Annual average growth		
	Annual average growth 1996	Annual average growth 2003	Comparison of 1996 and 2003 based
Private household population	134,500	218,700	63%
Household	152,600	209,100	37%
One person households	108,100	149,500	38%

North West			
	Annual average growth		
	Annual average growth 1996	Annual average growth 2003	Comparison of 1996 and 2003 based
Private household population	-4,400	11,600	-
Household	10,500	21,900	109%
One person households	10,700	18,600	74%

Components of Change

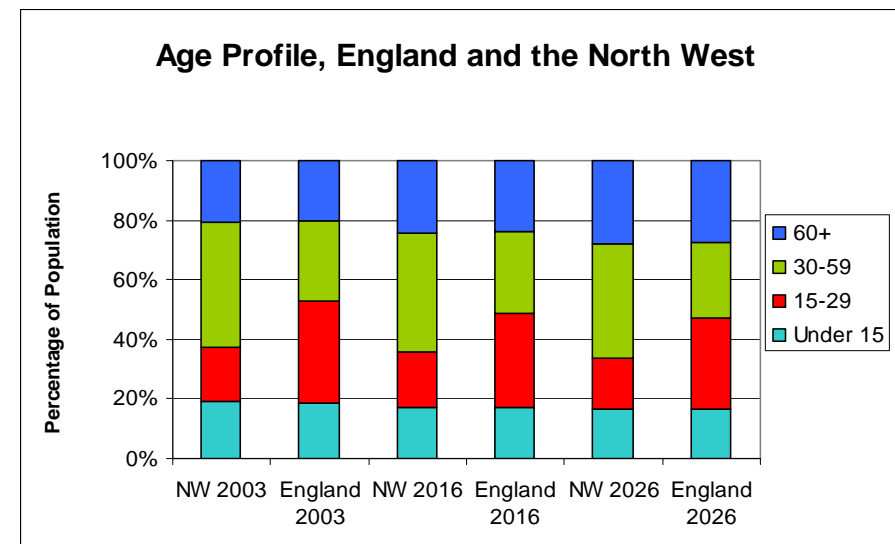
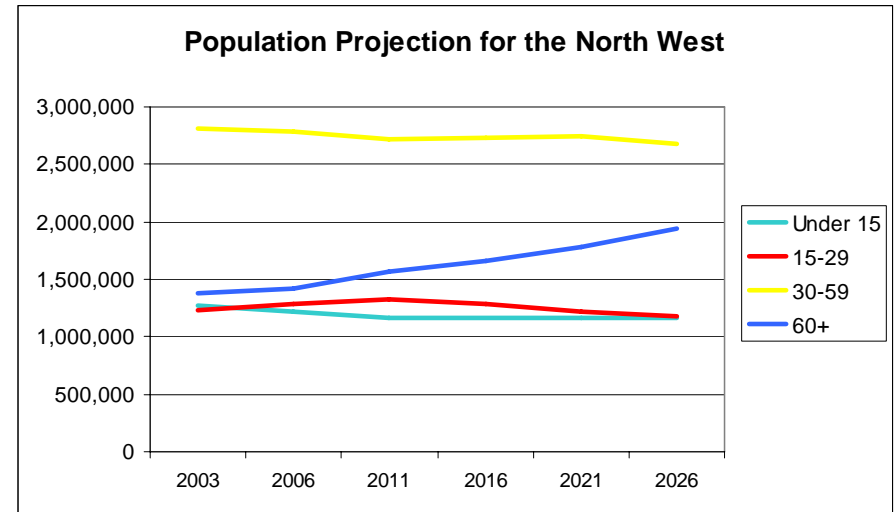
Components of Household Growth	England	North West
2003 Based		
Components of change (%):		
adult population level	58	41
age distribution	20	28
marital status distribution	-3	-5
household membership rates	20	31
remainder (cross products)	6	5

Private household population

- Greatest increase for 60+ age group
 - Nearly 1.9 Million 60+ people in the North West by 2026

- Decline in population for all other age groups

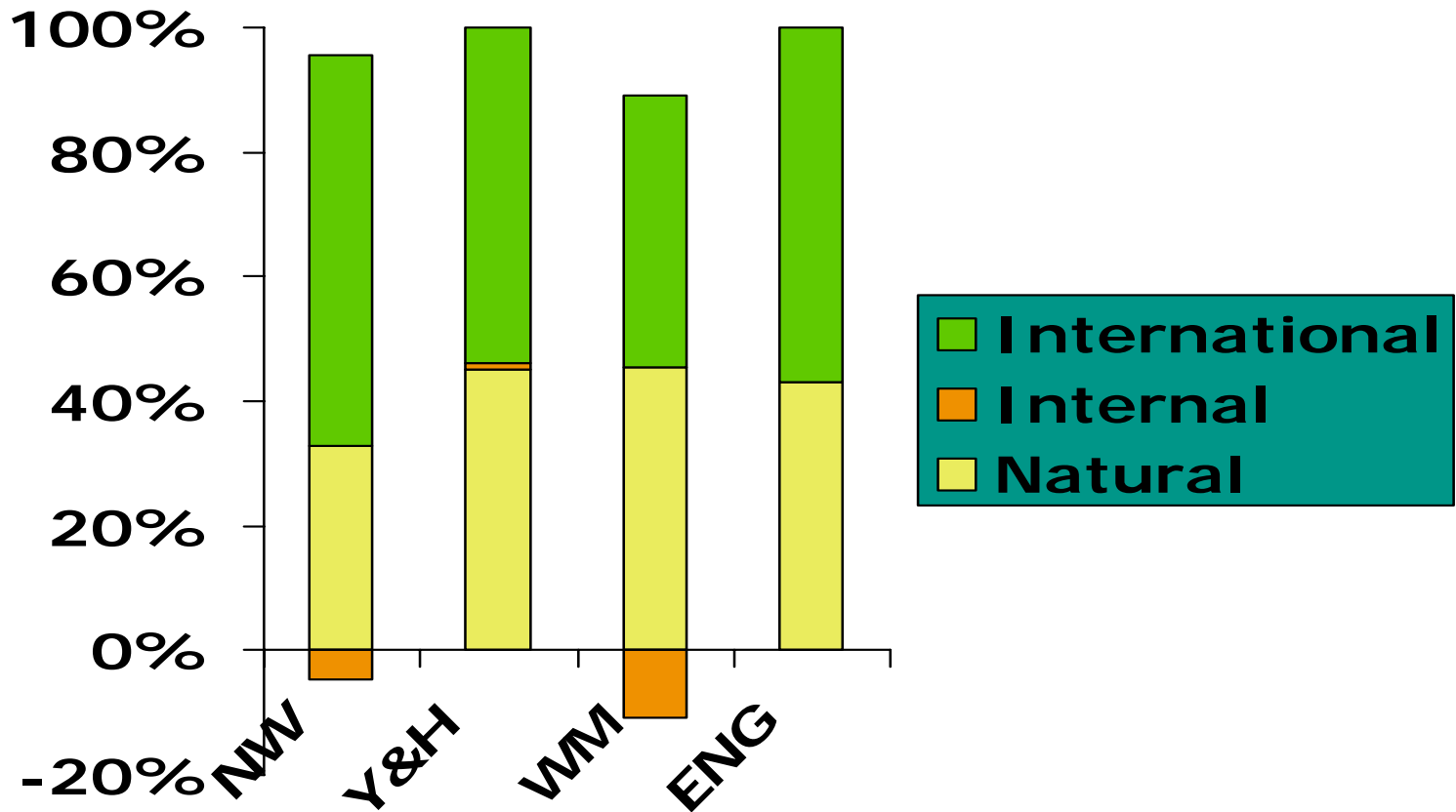
- Mirrors households



Components of Population Growth :2003 based Sub National Population Projections

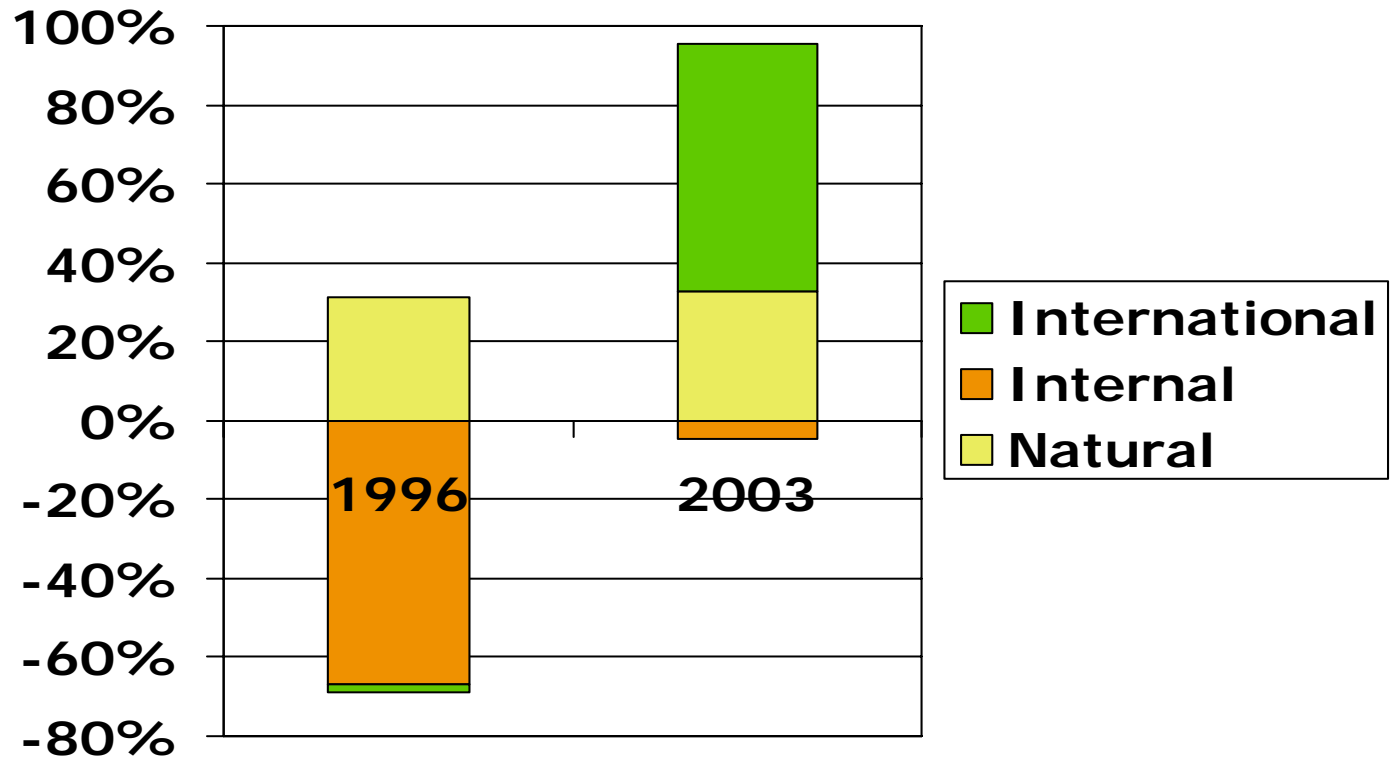
Population
Growth:

300,000 370,000 350,000 5.5 Million



- In England, net migration accounts for 65,000 of the 209,000 (31%) annual average household growth (2003 based) despite accounting for 54 per cent of population growth.
- In Y& H- likely to be similar as increase in the total population accounts for half of household growth – other factors – an ageing population, more one person household also important

Population Growth- Components of 1996 and 2003 based projections



Increased household growth results from higher population projections but households increasing faster than population due falling average household size and more one person households and increased longevity.

North West similar to national picture, though an increasingly older population appears more dominant factor.

- Household Projections – DCLG (contact me) can provide background data
- Population Projections (Sub National) : ONS